



MESSAGE FROM OUR BOARD OF SUPERVISORS

Dear Residents of Douglass Township,

As we navigate through the year, the Douglass Township Board of Supervisors extends a warm welcome to all of our residents, businesses and visitors! We are excited to continue working together to make our community an even better place to live, work, and raise families.

This year, we remain committed to enhancing the quality of life in our township through responsible governance, careful planning, and collaboration with all of you. From improving local infrastructure to fostering a sense of community, we are focused on ensuring that Douglass Town-

ship remains a vibrant, safe, and thriving place for everyone.

In this year's newsletter, you'll find important updates on upcoming projects, events, and resources available to you. We encourage you to stay engaged, share your ideas, and participate in township activities. Your input is invaluable, and we look forward to another successful year of working together.

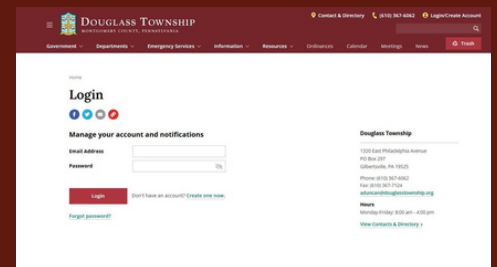
Thank you for your continued support and involvement. Here's to a bright and prosperous 2025 for all of Douglass Township!

Sincerely,
The Douglass Township Board of Supervisors

STAY INVOLVED, STAY INFORMED!

To stay up to date on all Douglass Township important information and news, create an account at www.douglasstownship.org. Select "Login/Create Account" in the upper right hand corner of the webpage to get started.

You can manage your account and the notifications that you receive when information is uploaded and shared on the Township website. This is a great way to be notified when information and updates are added.



The basin pictured above was installed at Douglass Park in 2024 to help manage stormwater issues. Public Works is planning to convert this basin to a rain garden like the existing one at the park to further improve water filtration and recharge capacity utilizing trees, shrubs, and herbaceous plantings.

STORMWATER MANAGEMENT

As awareness increases around the delicate nature of our environment, it becomes increasingly important for every person to do their part to contribute to the health of our ecosystem. An important environmental component is stormwater management.

Next to Alaska, Pennsylvania has the most miles of streams and rivers in the United States. Effective stormwater management provides environmental, social, and economic benefits to local communities. When stormwater management is done well, streams, rivers, and lakes are cleaner; flood risks are reduced; costs due to flood damage decrease; and community quality of life increases.



2025 Township Newsletter

DOUGLASS TOWNSHIP **PARKS AND RECREATION FACILITIES**

DOUGLASS PARK – 1320 E. Philadelphia Avenue Gilbertsville, Pa. 19525

Amenities include: Basketball Courts, Tennis and Pickleball Courts, Picnic Pavilions, Paved Walking Trails, Playgrounds and Swings, Soccer Fields and a Softball Field.

SMITH ROAD PARK – Corner of Congo Road and Smith Road

Amenities Include: Picnic Pavilion, Swings, Passive Open Space and Access to Minister Creek.

CONGO ROAD PARK – 475 Congo Road Gilbertsville, Pa. 19525

Amenities Include: Picnic Pavilion, Naturalized Walking Trails, Scout Encampment.

COME SEE WHAT OUR PARKS HAVE TO OFFER!

Permanently Preserved Passive Open Space

Moyer Open Space – 9.19 Acres

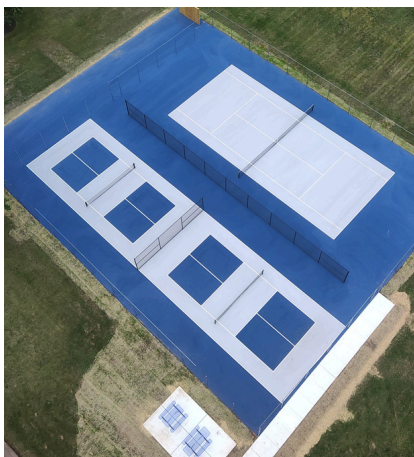
1261 Congo Road Gilbertsville, Pa. 19525

Keller Woods Open Space – 34.34 Acres

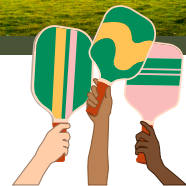
131 Keller Road Barto, Pa. 19504

Merkel Road Open Space – 11.64 Acres

255 Merkel Road Gilbertsville, Pa. 19525



PICKLEBALL/TENNIS COURT RENOVATION COMPLETE



Douglass Township completed the Tennis and Pickleball Courts construction Project at Douglass Park, transforming two existing tennis courts into **one tennis court and two pickleball courts**. In addition to the court renovations, the project installed important accessibility features including a new **ADA-compliant access route** to the courts to ensures all levels of mobility can enjoy the facilities.

This project would not have been possible without funding support from the following sources:

- **Douglass Township** – \$19,000
- **Montco 2040** – \$80,889
- **Pottstown Metro. Regional Planning** – \$25,000
- **Pottstown Area Health & Wellness Foundation** – \$20,000
- **Donations** – \$30,000



COUNTY LINE ROAD BRIDGE CLOSED

The Douglass Township Board of Supervisors closed the County Line Road Bridge on April 16, 2025 due to structural deficiencies and for the safety of the public.

A detour has been posted and it consists of a 1.7 mile route utilizing Swamp Creek Road, Montgomery Avenue and Route 100. Please plan your travel accordingly with these new traffic patterns.

The County Line Road bridge was originally constructed in 1939 and consists of a single span concrete structure with metal decking. The new proposed bridge will be a three piece prefabricated concrete structure that includes two twelve foot travel lanes and two four foot shoulders.

The new County Line Road Bridge is estimated to cost \$1,164,625.00 to construct and will take approximately 90 to 120 days to build.

This bridge project has been marked as a high priority by the Board of Supervisors. Township and Professional Staff have been working quickly to obtain the appropriate funding, State and Federal permits, and construction easements from all neighboring property owners to reduce the amount of time that this important infrastructure is closed to the public.

The Township will continue to provide updates at our regularly scheduled Board of Supervisors meetings as this project continues to approach final approval and construction is scheduled.

DELAWARE VALLEY REGIONAL PLANNING COMMISSION RETRO-REIMBURSEMENT GRANT RECEIVED

Douglass Township has been successful in securing \$931,700.00 (80%) in grant funding for the full replacement of the County Line Road Bridge. The Township is currently in the process of applying for a DCED Multimodal grant in the amount of \$232,925.00 to cover the remaining 20% funding requirement for the bridge replacement project. The Multimodal grant awards will be announced in November 2025.



property taxes

TAX COLLECTION

Douglass Township Tax Collector

Rebecca Zern
76 Merkel Road
Gilbertsville PA 19525
(610) 367-5257
rebeccaz@comcast.net

The Douglass Township Tax Collector collects the following taxes:

1. County, Township and School District **Real Estate** Taxes
2. Township and School District **Per Capita** Taxes
3. Township **Street Light Assessment** Tax

Douglass Township

2.6 mills General Fund
.5 mills EMS Services
.4 mills Fire Protection
Total 3.5 mills

Montgomery County

5.252 mills General Fund
.39 mills Community College
Total 5.642 mills

Boyertown Area School District

31.738 mills General Fund
Total 31.738 mills

NEW RESIDENTS

Please inform your employer of your new address and the **PSD code** (Political Subdivision code) for Douglass Township, Montgomery County (**060208**).

This will ensure your local taxes will be put to use in your new resident township.



Berks EIT Bureau

1125 Berkshire Blvd
Suite 115
Wyomissing PA 19610
Phone: (610) 372-8439
Toll free: 1 (855) 372-8439
www.berkseit.com

LOCAL EARNED INCOME TAX

Under the Local Enabling Tax Act, all residents of Douglass Township are assessed a tax of 1% on their earned income. 1/2 of the 1% (0.5%) supports the Boyertown Area School District, and 1/2 of the 1% (0.5%) is general revenue for Douglass Township.

Berks Earned Income Tax Bureau collects the **Earned Income Tax** (EIT) and **Local Services Tax** (LST) for Douglass Township.



PUBLIC WORKS DEPARTMENT

The Public Works Department takes their role seriously in the community by providing the ongoing care and maintenance of municipal infrastructure and public facilities.

The **Douglass Township Public Works Facility** is located at **108 Municipal Drive** in Gilbertsville. Public Works operations, including requests for service, may be contact by telephone at **610-367-0984**.

The Township Public Works Department completes the maintenance of roadways and facilities with 6 full time personnel.

Maintenance responsibilities include:

- Maintain and repair **73.08 miles** of roadways and bridges
- Township buildings, properties and facilities
- Fleet of vehicles and heavy equipment
- Community parks, walking trails and passive open space
- Storm sewer systems and pipes
- Streetlights, traffic signals and traffic signs
- Snowplowing and winter maintenance
- Roadside mowing within the ultimate right of way

2025 ROAD PROJECTS

TAR AND CHIP (base repair, tar/chip, fog seal)

Hoffmansville Road
Middle Creek Road



BLACKTOP OVERLAY

Smith Road
Fairway Circle



REPORT A POTHOLE OR HAZARDOUS ROAD CONDITION

Potholes happen when water seeps into cracks in the pavement and expands as it freezes, breaking down the road surface over time. Temperature swings make the problem worse, leading to bigger cracks and rough roads.

Douglass Township

Call: 610-367-0984

Submit online:

<https://www.douglasstownship.org/resources/request-for-services/>

PennDOT

Call: 1-800-FIX-ROAD

Submit online:

<http://www.customercare.penndot.pa.gov/>





2025 Township Newsletter

SOLID WASTE AND RECYCLING DEPARTMENT

Douglass Township, Montgomery County, awarded a five-year contract to **Waste Management of Southeastern Pennsylvania** for weekly curbside collection of solid waste and recycling materials. This contract is set to expire on December 31, 2025, with an option for a one-year extension.

Residents are charged **\$77.25 per quarter**, or \$309.00 annually, for this curbside service. The quarterly fee includes the collection of one large bulk item each month, which is picked up during the first full week of the month. Thanks to the competitive bidding process, our quarterly trash and recycling collection costs remain significantly lower than neighboring municipalities.

To report a missed collection or other concerns related to curbside trash and recycling collection, please contact **Waste Management** at **1-800-869-5566**. Be sure to let the representative know that you are a resident of **Douglass Township, Montgomery County, Pennsylvania**.

2025 FALL LEAF COLLECTION

Curbside Leaf Collection will begin on **Monday October 27, 2025** and will end on **Friday December 12, 2025** weather permitting.

Please make sure that your leaves are raked as close to the curb as possible. The collection equipment hose can only reach 2 to 4 feet from the roadway. Sticks, trimmings and corn stalks cannot be mixed in with your leaf pile, it will clog and cause damage to our collection equipment.



HOUSEHOLD HAZARDOUS WASTE 2025 MONTGOMERY COUNTY, PA RESIDENTIAL EVENTS By Appointment Only. Preregistration is Required.

Register at www.MontcoPARecycles.org

DATES:

Saturday, April 26
Indian Valley Middle School
130 Maple Avenue, Harleysville

Saturday, June 7
Temple University-Amber Campus
Enter at 1431 E. Butler Pike, Ambler

Saturday, June 21
Norristown Area High School
1900 Eagle Drive, Norristown

Saturday, June 28
Abington Middle School
Enter at 2056 Susquehanna Road, Abington

Saturday, September 20
Spring-Ford 9th Grade Center
400 South Lewis Road, Royersford

SUNDAY, October 12
Lower Merion Transfer Station
1300 N. Woodbine Avenue, Penn Valley

Free residential collection events are held outdoors. There are no permanent drop off locations, only these collection events. Montco residents may also attend any Household Hazardous Waste event held by Bucks, Chester, Delaware, or Philadelphia Counties.

Please do not contact the host sites, as they are not affiliated with the events. In case of severe weather, call 610.278.3618, option 6 for event status.

Contact us at:
Recycling@MontgomeryCountyPA.gov
610.278.3618



ACCEPTABLE HOUSEHOLD MATERIALS

PAINT PRODUCTS	OUTDOOR PRODUCTS	AUTOMOTIVE PRODUCTS	HOUSEHOLD PRODUCTS	HOUSEHOLD OTHER
Paint (Household)	Sealants and Caulks	Auto Air Conditioners	Auto Oil Filters	Auto Batteries
Stains and Sealants	Sealants	Auto Radiators	Auto Radiators	Auto Radiators
Oil Based Paints	Auto Radiators	Auto Radiators	Auto Radiators	Auto Radiators
Auto Radiators	Auto Radiators	Auto Radiators	Auto Radiators	Auto Radiators
Auto Radiators	Auto Radiators	Auto Radiators	Auto Radiators	Auto Radiators
Auto Radiators	Auto Radiators	Auto Radiators	Auto Radiators	Auto Radiators
Auto Radiators	Auto Radiators	Auto Radiators	Auto Radiators	Auto Radiators
Auto Radiators	Auto Radiators	Auto Radiators	Auto Radiators	Auto Radiators
Auto Radiators	Auto Radiators	Auto Radiators	Auto Radiators	Auto Radiators

UNACCEPTABLE MATERIALS

Explosives & Ammunition	Flammable Liquids	Flammable Solids	Flammable Gases	Flammable Powders
Flammable Liquids	Flammable Solids	Flammable Gases	Flammable Powders	Flammable Liquids
Flammable Solids	Flammable Gases	Flammable Powders	Flammable Liquids	Flammable Solids
Flammable Gases	Flammable Powders	Flammable Liquids	Flammable Solids	Flammable Gases
Flammable Powders	Flammable Liquids	Flammable Solids	Flammable Gases	Flammable Powders
Flammable Liquids	Flammable Solids	Flammable Gases	Flammable Powders	Flammable Liquids
Flammable Solids	Flammable Gases	Flammable Powders	Flammable Liquids	Flammable Solids
Flammable Gases	Flammable Powders	Flammable Liquids	Flammable Solids	Flammable Gases
Flammable Powders	Flammable Liquids	Flammable Solids	Flammable Gases	Flammable Powders
Flammable Liquids	Flammable Solids	Flammable Gases	Flammable Powders	Flammable Liquids

Not all of the above items are accepted for collection. Some items may be accepted only if they are in original packaging and labeled properly. Items not listed here are not accepted for collection.

DROP OFF GUIDELINES

- Leave items at home that are not for the event so that they are not removed accidentally.
- If you need your gas can or container returned, please tape a note to it stating that you want to keep it.
- You may arrive any time within your registered appointment window.
- Please print out your ticket or write your name and appointment time on a piece of paper, and place it on your dashboard where it is visible to event staff.
- If you cannot attend the event, please cancel your appointment through your Eventbrite ticket or by emailing Recycling@MontgomeryCountyPA.gov, as others may be waiting for a space.
- NO TVs, electronics, or appliances will be accepted.
- Event workers will unload your materials so please remain in your vehicle.
- BUSINESSES AND CONTRACTORS WILL BE TURNED AWAY, no commercial/industrial waste accepted.
- Bring all substances in original containers with labels. Items must be identifiable. Do not mix materials.
- Upright lids on all containers. If containers are leaking, pack in larger container with newspaper to soak up leaks.
- NO 25- OR 50-GALLON DRUMS ALLOWED. Five-gallon buckets are the largest acceptable container. Maximum amount accepted per vehicle is 25 gallons or 225 pounds.
- There are no permanent drop off locations in the region for household hazardous waste, only the listed collections.

2025 HOUSEHOLD HAZARDOUS WASTE SCHEDULE RELEASED

Montgomery County has released the **2025 Household Hazardous Waste** event schedule. These events are by **appointment only** and **preregistration is required**. For more information, visit **www.montgomerycountyparecycles.org**



BUILDING & ZONING DEPARTMENT

We would like to inform all residents and contractors that Douglass Township utilizes a third-party inspection agency for building inspections and plan reviews. This allows us to ensure all construction projects comply with local building codes and safety standards.

Fillable Permit Applications can be found on the Douglass Township website.

All permit application submissions can be submitted in person to the Douglass Township Administration Building located at 1320 E. Philadelphia Avenue Gilbertsville, Pa. 19525 or electronically to our Building and Zoning Department.

BUILDING INSPECTIONS

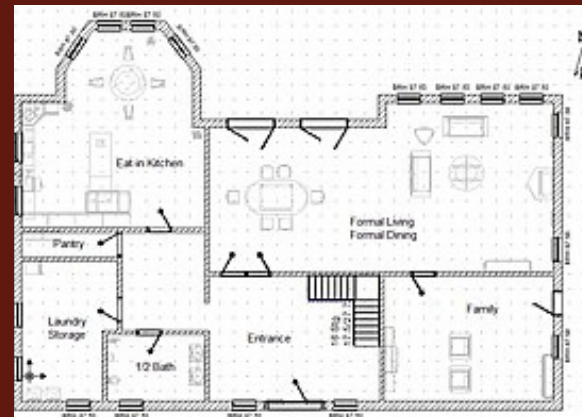
To schedule inspections, please contact the inspection agency directly.

KRAFT MUNICIPAL GROUP

Inspection requests: 610-775-7185

Email: contact@kraftmunicipalgroup.com

Please provide **48 hours notice** for inspection requests

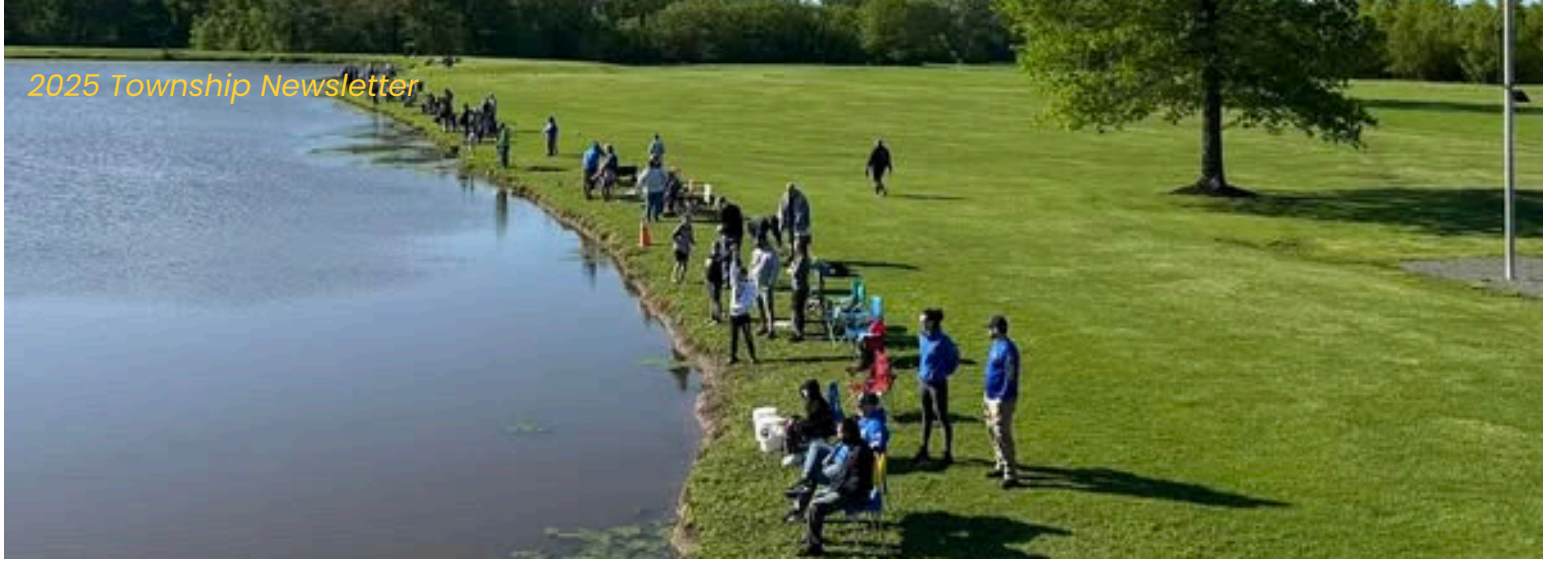


GENERAL INFORMATION AND ZONING INFORMATION

For general inquiries or for zoning information, please contact the **Douglass Township Administration Building** at **610-367-6062**, and press the prompt for **Building and Zoning Department**.

<https://www.douglasstownship.org/departments/building-zoning/>





2025 TROUT RODEO

The Douglass Township Board of Supervisors and Recreation Committee would like to thank everyone who attended the annual trout rodeo held on the Mashintonio Farm on Saturday May 10, 2025.

There were over 100 children in attendance for the morning session and our United States Military Veterans finished off the day with an afternoon session.

Thank you to Tony Mashintonio for offering your beautiful property for this event each year. We would also like to thank our sponsors for the event and all of the volunteers who made this day possible. Without your community support, this event would not be a success each year.



THANK YOU TO OUR EVENT SPONSORS!

A.D. Moyer Lumber – Lehigh Valley Health Network – Kraft Municipal Group
Brant and Associates LLC – Gabelsville Athletic Association
Friendship Hook and Ladder of Boyertown Social Club – Winners Circle Awards





POLICE DEPARTMENT

A Message from Chief Evans:

As we approach the end of June, I want to thank the residents of Douglass Township for their continued support of our Officers and our Police Department.

Your cooperation and trust are essential in keeping our neighborhoods safe, and together, as we continue to make our community a great place to live and raise a family.

Sincerely,

Chief Robert Evans

Safety Tips:

- **Scam Alert:** Be wary of phone scams and online phishing attempts. Never share personal information with unsolicited callers or senders. If you suspect a scam, contact the police department immediately.
- **Traffic Safety:** With the warmer weather and summer vacations, please be mindful of increased traffic volume and pedestrian activity. Obey all speed limits, cross walks and yield signs.
- **Distracted Driving:** The Police Department is seeing an alarming number of distracted driving accidents in our region. Please do not utilize handheld devices while operating a motor vehicle.

Contact Us: In the event of an emergency, please dial 911. For non-emergencies, we are always available to assist you. You can reach us at **610-367-0466** or visit our website at www.douglasstownship.org/emergency-services/police.

CHILD SEAT SAFETY CHECKS

Did you know that the Douglass Township Police Department has a certified **child seat inspection technician** on staff? Officer Sedgwick is *available by appointment* to assist you with inspection and proper installation of your child safety seat. Please contact the Douglass Township Police Department at **610-367-0466 ext. 9135** to schedule your appointment today!



REMINDER TO LOCK YOUR CAR DOORS

The Douglass Township Police Department is experiencing an *increase in vehicle break in complaints* within our community. With this growing trend, we remind you to lock your vehicle, take your keys and hide your belongings.

Lock your car



Criminals check door handles at night. Make sure valuables are not kept in your vehicle and lock your doors.

Take your keys

Never leave your keys in your vehicle and always lock your doors.



Hide your belongings

Remove items of value from your vehicle.





www.gilbertsvillefireandrescue.org

GILBERTSVILLE FIRE AND RESCUE 610-367-0277

On behalf of the men and women of **Gilbertsville Fire & Rescue**, we extend our deepest gratitude for your continued support and trust in the services that we provide. As a **100% volunteer** fire company, we rely on the support of our community to ensure we can continue to serve you in your times of need.

In 2024, our dedicated volunteers responded to **344 emergency dispatches**, from fires and medical emergencies to rescues and accidents. These incidents highlight the critical role that our membership plays in the safety and well-being of our community.

Every year, we rely on funds to *maintain and upgrade our equipment, provide training to our volunteers, and ensure we have the necessary resources to stay prepared for any emergency.* Your support ensures that we are ready to provide **24/7 emergency response**, every day of the year.

Being a 100% volunteer-based fire company means that no one on our team receives compensation for their service. *Every firefighter and contributing member gives their time and is committed to keep you and your family safe.*

However, the costs associated with running a fire company have increased significantly from maintaining or replacing apparatus to purchasing personal protective gear. Your donations ensure that we are always ready to protect you, your loved ones, and your property.

We continue to seek new volunteers in our community! If you are interested in becoming a volunteer firefighter, please contact us at 610-367-0277. No experience is required and all equipment and training is provided at no cost to you. **Our members meet every Thursday evening beginning at 7:00PM.** Please stop in, take a look around, and ask questions about fire service. We look forward to meeting you!



Test your smoke and CO detectors every month!



We can't help you if we can't find you.



**Working
SMOKE ALARMS
SAVE LIVES**

KNOX HOME BOX

WHAT IS A KNOXBOX?

- A knoxbox is a secure way to lock a key to your home in a tamper proof box for emergency responders to access your home when residents are unable to open the door or are not present during an emergency.
- Knox boxes reduce forced entry damage, expensive repair costs and risk to emergency responders.

WHO IS REQUIRED TO HAVE A KNOX BOX?

- Any residential home or commercial building with an automatic fire alarm or sprinkler system.





2025 Township Newsletter

EMERGENCY MEDICAL SERVICES

Emergency Medical Services Tax Implemented

In 2023, you may have noticed a new line item on your tax bill labeled "Emerg Med Srvc". This **Emergency Medical Services (EMS) Tax** does not replace your annual ambulance subscription.

The emergency medical services tax supplements the cost to operate and staff an advanced life support ambulance 24 hours a day, 7 days a week within our municipal borders. Medical billing, Medicaid and Medicare are no longer covering the actual costs to provide ambulance service in the United States.

The Township has two primary response agencies that have first due coverage area in our community. Gilbertsville Area Community Ambulance Service and Bally Community Ambulance are the two provider agencies that proudly serve the residents of Douglass Township.

The result of not properly funding emergency medical services in our community would be the failure and loss of our local EMS agencies, longer response times and ultimately the loss of life.

DIAL 911 FOR EMERGENCIES



BALLY AMBULANCE

Phone: 610-845-2501

Fax: 610-845-7898

537 Chestnut Street

Bally, Pa. 19503

<https://ballyambulance.org>



GILBERTSVILLE AREA COMMUNITY AMBULANCE SERVICE

Phone: 610-367-9191

Fax: 610-369-3931

Email: mail@medic332.org

91 Jackson Road

Gilbertsville, Pa. 19525

www.medic332.org





Douglass Township – Montgomery County

1320 E. Philadelphia Avenue, PO Box 297, Gilbertsville, Pa. 19525

Telephone: 610-367-6062 Fax: 610-367-7124

Website: www.douglasstownship.org

Meetings

Board of Supervisors: 1st and 3rd Monday of each month at 7:00PM

Planning Agency: 2nd Thursday of each month at 7:00PM

Board of Supervisors

Joshua Z. Stouch – Chairman
Sara Carpenter – Vice Chairman
Donald Bergstresser – Supervisor

Administrative Staff

Township Manager: Andrew A. Duncan
Assistant Township Manager: David S. Thompson
Township Secretary: Marcy Meitzler
Township Treasurer: Cynthia O'Donnell
Zoning Officer: David S. Thompson
Roadmaster: Michael Heydt
Recycling Coordinator: Mckenna Powanda