

MULCHING DO'S & DONT'S

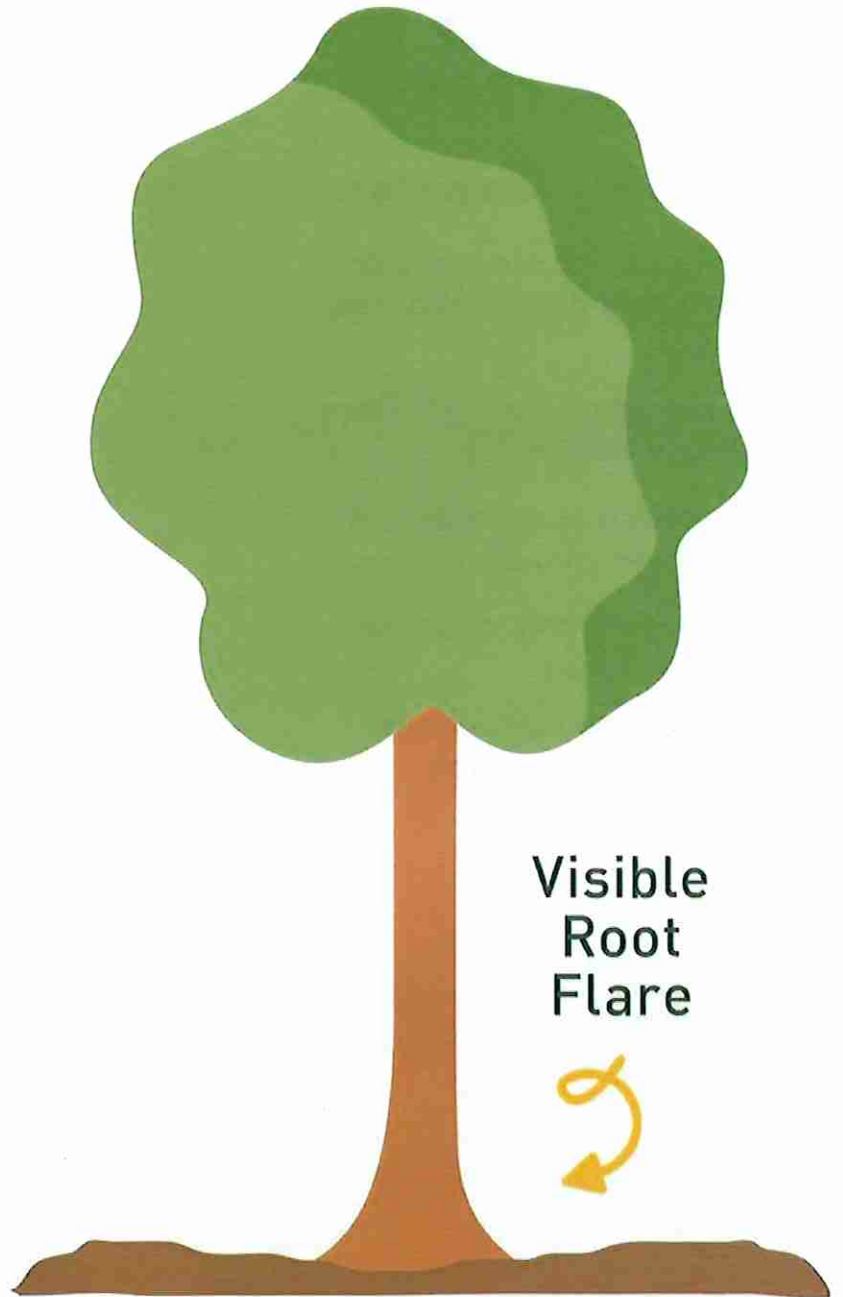
**PROPER MULCHING
WILL EXTEND THE
LIFE OF YOUR
TREES!**

Mulching Do's:

- ✓ Spread a 2 - 4 inch layer of mulch
- ✓ Ensure the tree's root flare is exposed
- ✓ Keep mulch 3 - 5 inches away from tree trunks
- ✓ Mulch to the tree's drip line, when possible
- ✓ Use organic mulches wood chips, pine needles, & hardwood



GOOD



PROPER MULCHING

MULCHING DO'S & DONT'S

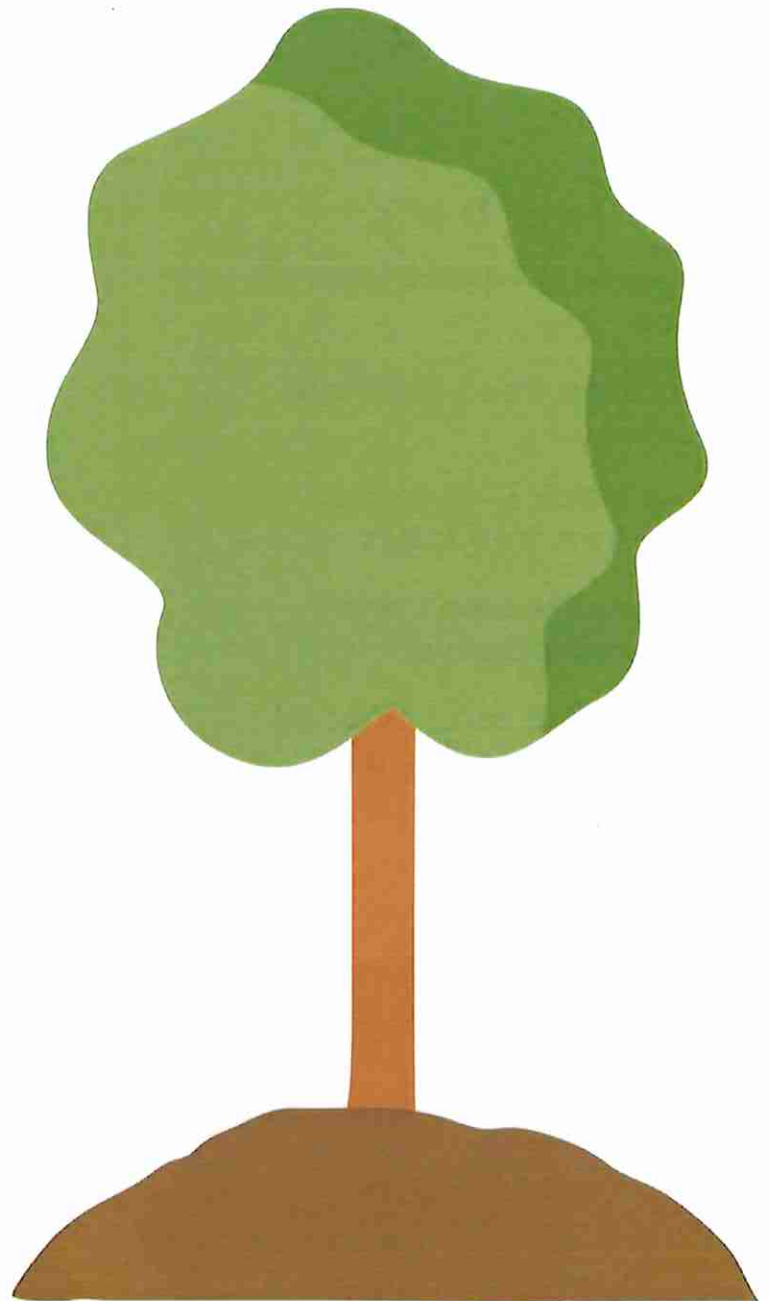
**IMPROPER
MULCHING WILL
SHORTEN THE LIFE
OF YOUR TREE!**

Mulching Dont's:

- ✗ No mulch volcanoes! Don't pile mulch around the tree trunk
- ✗ Do not cover the root flare or trunk with mulch
- ✗ Do not use more than a 4 inch layer of mulch
- ✗ Avoid inorganic mulch or dyed mulches
- ✗ Do not use plastic weed barriers under mulch



BAD



VOLCANO MULCHING