

**PLANT SCHEDULE**

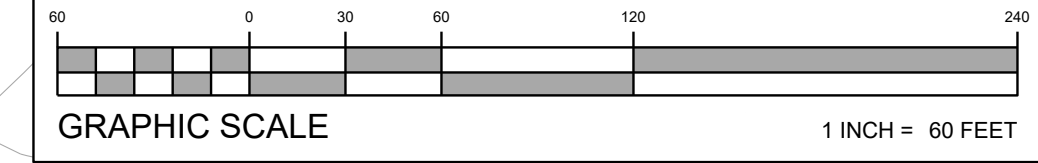
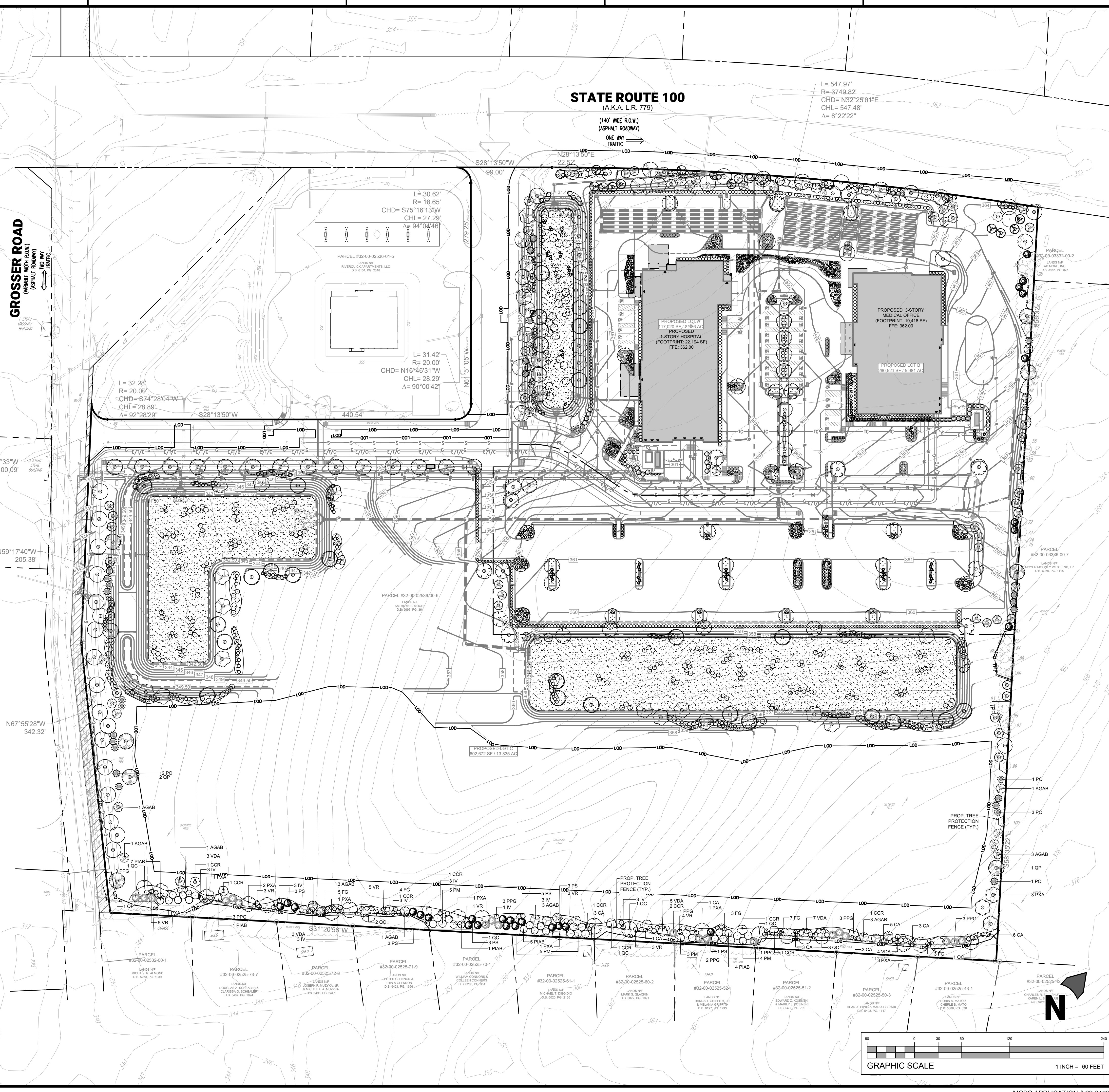
QTY	BOTANICAL / COMMON NAME	SIZE	CONTAINER
18	<i>Picea abies</i> / Norway Spruce	8" MIN.	B+B
24	<i>Pseudotsuga menziesii</i> / Douglas Fir	8" MIN.	B+B
28	<i>Picea omorika</i> / Serbian Spruce	8" MIN.	B+B
26	<i>Picea pungens</i> 'Glauca' / Colorado Blue Spruce	8" MIN.	B+B
25	<i>Pinus strobus</i> / Eastern White Pine	8" MIN.	B+B
25	<i>Thuja x 'Green Giant'</i> / Green Giant Arborvitae	8" MIN.	B+B
<b>ORNAMENTAL TREES</b>			
37	<i>Amelanchier x grandiflora</i> 'Autumn Brilliance' / 'Autumn Brilliance' Serviceberry	1 1/2"-2" CAL.	B+B
24	<i>Cercis canadensis</i> / Eastern Redbud	1 1/2"-2" CAL.	B+B
21	<i>Cornus x rutgersensis</i> 'Starlight KM-43' / Rutgers White Dogwood	1 1/2"-2" CAL.	B+B
11	<i>Crataegus viridis</i> 'Winter King' / Winter King Hawthorn	1 1/2"-2" CAL.	B+B
12	<i>Magnolia virginiana</i> / Sweet Bay	1 1/2"-2" CAL.	B+B
16	<i>Prunus serrulata</i> 'Kwanzan' / Flowering Cherry	1 1/2"-2" CAL.	B+B
<b>SHADE TREES</b>			
30	<i>Acer rubrum</i> / Red Maple	2-2 1/2" CAL.	B+B
18	<i>Carpinus caroliniana</i> / American Hornbeam	2-2 1/2" CAL.	B+B
15	<i>Gleditsia triacanthos</i> 'Skyline' TM / Skyline Thornless Honey Locust	2-2 1/2" CAL.	B+B
12	<i>Liquidambar styraciflua</i> 'Rotundiloba' / Seedless Sweetgum	2-2 1/2" CAL.	B+B
26	<i>Nyssa sylvatica</i> 'Wildfire' / Black Gum	2-2 1/2" CAL.	B+B
20	<i>Platanus x acerifolia</i> / London Plane Tree	2-2 1/2" CAL.	B+B
26	<i>Quercus bicolor</i> / Swamp White Oak	2-2 1/2" CAL.	B+B
11	<i>Quercus coccinea</i> / Scarlet Oak	2-2 1/2" CAL.	B+B
10	<i>Quercus palustris</i> / Pin Oak	2-2 1/2" CAL.	B+B
25	<i>Quercus rubra</i> / Red Oak	2-2 1/2" CAL.	B+B
17	<i>Tilia americana</i> / American Linden	2-2 1/2" CAL.	B+B
<b>DECIDUOUS SHRUBS</b>			
132	<i>Aronia arbutifolia</i> / Black Chokeberry	36" MIN.	3 GAL.
15	<i>Azalea Encore</i> 'Autumn Sunset' / Autumn Sunset Encore Azalea	15-18"	3 GAL.
200	<i>Aronia melanocarpa</i> / Low Scape Mound Aronia	15-18"	1 GAL.
65	<i>Clethra alnifolia</i> / Summersweet Clethra	24-30"	2 GAL.
20	<i>Cornus racemosa</i> / Gray Dogwood	24-30"	3 GAL.
3	<i>Cornus sericea</i> / Yellow Twig Dogwood	24-30"	3 GAL.
77	<i>Deutzia gracilis</i> 'Nikko' / Dwarf Deutzia	15-18"	3 GAL.
6	<i>Deutzia x 'Yuki Cherry Blossom'</i> / Yuki Cherry Blossom Deutzia	18-24"	3 GAL.
12	<i>Fothergilla major</i> / Fothergilla	36" MIN.	3 GAL.
6	<i>Hydrangea arborescens</i> 'NCHAS' / Invincibelle Wee White Hydrangea	15-18"	2 GAL.
49	<i>Hypericum x 'Hidcote'</i> / Hidcote St. John's Wort	24-30"	3 GAL.
49	<i>Ilex verticillata</i> / Winterberry	24-30"	3 GAL.
49	<i>Itea virginica</i> 'Henry's Garnet' / Henry's Garnet Sweetspire	18-24"	3 GAL.
40	<i>Myrica pensylvanica</i> / Northern Bayberry	24-30"	3 GAL.
24	<i>Rhododendron viscosum</i> / Swamp Azalea	18-24"	2 GAL.
25	<i>Rosa x 'Radcliff'</i> / Double Knock Out Rose	36" MIN.	3 GAL.
20	<i>Spiraea japonica</i> 'Double Play Red Spirea' / Double Play Red Spirea	18-24"	3 GAL.
69	<i>Viburnum dentatum</i> 'Arrowwood' / Arrowwood Viburnum	24-30"	3 GAL.
<b>EVERGREEN SHRUBS</b>			
338	<i>Ilex crenata</i> 'Compacta' / Dwarf Japanese Holly	24-30"	B+B
203	<i>Ilex glabra</i> 'Compacta' / Compact Inkberry	24-30"	B+B
44	<i>Ilex glabra</i> 'Compacta' / Compact Inkberry	15-36"	3 GAL.
100	<i>Ilex glabra</i> 'Strong Box' / Strongbox Inkberry Holly	18-24"	3 GAL.
100	<i>Juniperus horizontalis</i> 'Blue Chip' / Blue Chip Juniper	15-18" SPRD.	3 GAL.
179	<i>Juniperus horizontalis</i> 'Bar Harbor' / Bar Harbor Creeping Juniper	15-18" SPRD.	3 GAL.
25	<i>Prunus laurocerasus</i> 'Schlipkaensis' / Schlipka Laurel	30-36"	3 GAL.
24	<i>Viburnum rhytidophyllum</i> / Leatherleaf Viburnum	24-30"	3 GAL.
58	<i>Viburnum rhytidophyllum</i> / Leatherleaf Viburnum	36" MIN.	3 GAL.
43	<i>Viburnum rhytidophyllum</i> / Leatherleaf Viburnum	48" MIN.	B+B
<b>ORNAMENTAL GRASSES</b>			
33	<i>Calamagrostis x acutiflora</i> 'Karl Foerster' / Feather Reed Grass	18-24"	2 GAL.
56	<i>Pennisetum alopecuroides</i> 'Hameln' / Hameln Dwarf Fountain Grass	18-24"	2 GAL.
116	<i>Pennisetum alopecuroides</i> / Fountain Grass	30-36"	2 GAL.
116	<i>Sporobolus heterolepis</i> / Prairie Dropseed	18-24"	2 GAL.
<b>PERENNIALS</b>			
77	<i>Lavandula angustifolia</i> / English Lavender	18-24"	2 GAL.
222	<i>Liriope muscari</i> 'Big Blue' / Big Blue Lilyturf	10-12"	1 GAL.
25	<i>Liatris spicata</i> / Blazing Star	12-15"	2 GAL.
37	<i>Nepeta faassenii</i> 'Cat's Meow' / Catmint	15-18"	1 GAL.
31	<i>Rudbeckia fulgida</i> 'Goldstrum' / Black Eyed Susan	12-15"	1 GAL.
32	<i>Rudbeckia fulgida</i> 'Little Goldstar' / Little Goldstar Black Eyed Susan	12-15"	2 GAL.
<b>GROUND COVERS</b>			
106	<i>Rhus aromatica</i> 'Gro-Low' / Gro-Low Fragrant Sumac	15-18"	2 GAL.

**TREE REPLACEMENT CHART**

SECTION	REQUIREMENTS	TO REMAIN	TO BE REMOVED	REQUIREMENT	COMPLIANCE
(B)(1)(B)	EACH TREE MEASURING 12 INCHES DBH TO 18 INCHES DBH WHICH IS DESIGNATED "TO BE REMOVED" AS OUTLINED ABOVE, SHALL BE REPLACED WITH AT LEAST ONE TREE OF NOT LESS THAN 2.5 INCHES IN CALIPER AT THE TIME OF PLANTING.	23 TREES BETWEEN 12-18 INCHES IN DIAMETER.	9 TREES BETWEEN 12-18 INCHES IN DIAMETER.	9 X 1 = 9 TREES AT 2.5 INCHES IN DIAMETER.	COMPLIES
(B)(1)(C)	EACH MATURE TREE GREATER THAN 18 INCHES DBH WHICH IS DESIGNATED "TO BE REMOVED" AS OUTLINED ABOVE, SHALL BE REPLACED WITH ONE OR MORE TREES WHOSE TOTAL TRUNK DIAMETER MEASURED BY CALIPER AS NURSERY STOCK EQUALS OR EXCEEDS THE TOTAL INCHES IN DBH OF THE TREE(S) REMOVED. NO INDIVIDUAL REPLACEMENT TREE MAY BE LESS THAN 2.5 INCHES IN CALIPER WHEN PLANTED.	8 TREES (176 INCHES DIA.), 18 INCHES OR GREATER IN DIAMETER.	1 TREE (21 INCH DIA.).	21 / 2.5 = 8.4 OR 8 TREES	COMPLIES
(B)(1)(D)	REPLACEMENT TREES MAY COUNT TOWARD THE TOTAL NUMBER OF REQUIRED STREET TREES OR PROPERTY LINE BUFFER TREES, IF THE NUMBER OF REPLACEMENT TREES REQUIRED EXCEEDS THE TOTAL NUMBER OF STREET AND BUFFER TREES REQUIRED, THE APPLICANT SHALL BE RESPONSIBLE FOR PLANTING THE REMAINING REPLACEMENT TREES EITHER ON-SITE OR OFF-SITE AT ANOTHER LOCATION AS DESIGNATED BY THE TOWNSHIP BOARD OF SUPERVISORS.	TOTAL TREES TO REMAIN: 31 TREES 12" OR GREATER IN DIA.	TOTAL TREES TO BE REMOVED: 10 TREES 12" OR GREATER IN DIA.	TOTAL TREE CREDITS USED: 17 TREES IN THE SOFTENING BUFFER UNDER SECTION 1205.6 (B) (B) OF ZONING.	COMPLIES

**LAND IDENTITY**  
A Landscape Architecture Company  
1314 HUNTER STREET, WESTFIELD, PA 15389  
724.261.4621  
WWW.LANDIDENTITY.COM

**NOTES**  
1. ADJUSTMENTS AS WELL AS ADDITIONAL PLANTINGS MAY BE REQUIRED AS DIRECTED BY THE TOWNSHIP PRIOR TO PROJECT COMPLETION.  
2. THE TOWNSHIP RESERVES THE RIGHT TO REQUIRE ADDITIONAL LANDSCAPE BUFFER PLANTINGS, FOLLOWING SUBSTANTIAL COMPLETION OF CONSTRUCTION, SHOULD VEGETATION TO BE PRESERVED NOT BE PRESERVED OR NOT OTHERWISE BE AS REPRESENTED ON THE FINAL LANDSCAPE PLAN.  
3. THE SPECIES WERE SELECTED BASED ON SUITABILITY FOR THE LOCAL CONDITIONS.



**STEPHEN M. MCBREARTY**  
REGISTERED PROFESSIONAL ENGINEER  
PENNSYLVANIA LICENSE NO. 083946  
NOT FOR CONSTRUCTION

**LANDCORE**  
PH 800.975.8667  
PHILADELPHIA, PENNSYLVANIA 19101-0635

PROJECT: NEIGHBORHOOD HOSPITAL AND MEDICAL OFFICE BUILDING  
#107 & #109 GROSSER ROAD  
DOUGLASS TOWNSHIP  
MONTGOMERY COUNTY, PENNSYLVANIA  
APPLICANT: LEHIGH VALLEY HEALTH NETWORK REALTY HOLDING COMPANY, INC.  
TITLE: OVERALL LANDSCAPE PLAN

DATE: 2022-04-01  
SHEET: 10 OF 23  
REV. NO.: 4